

The **NORCHEM Model A*1100 ASA** emulsification unit is designed to meter and emulsify ASA (alkenyl succinic anhydride) with an emulsifying polymer or modified grafted liquid starch at emulsion flowrates up to 20 gpm (1200 GPH) @ 1-5% concentration and up to 30 GPH (2000 ml/min) of neat ASA. The **A*1100** is modular in design consisting of a turbine hydraulic assembly, neat ASA and polymer / liquid starch metering modules, control panel and Powder Coat or SS base.

MODEL A*1100 SYSTEM SPECIFICATIONS:

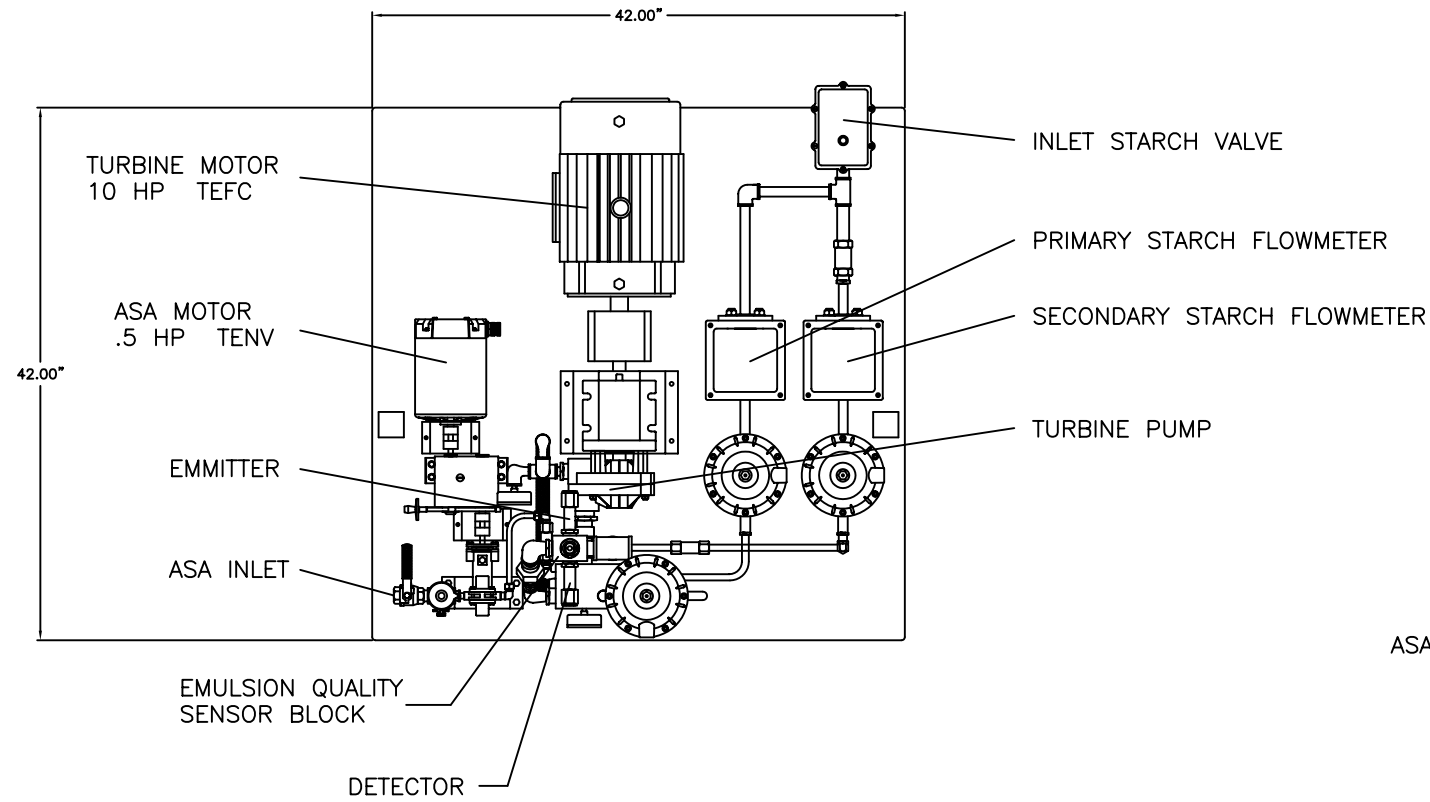
FRAME:	BASE:	42" W X 42" L X 64" H
	CONSTRUCTION:	POWDER COATED MILD STEEL
PANEL:	ENCLOSURE:	NEMA 4X
TURBINE MODULE:	PUMP:	STAINLESS STEEL, 300 PSI OPERATING PRESSURE
	DRIVE:	10 HP AC FREQUENCY
	MOTOR:	460/3/60, 10 HP, 12.5 AMP, 0-4800 RPM, TENV, WASHDOWN DUTY
	SEAL:	PROPRIETARY FLOW THRU ENCAPSULATED CARBIDE/GRAPHITE
ASA/STARCH:	PUMP:	ROTARY GEAR, STAINLESS STEEL, CHEMICAL SERVICE
	DRIVE:	AC FREQUENCY
	MOTOR:	460/3/60, 0.5 HP, 1.2 AMP, 0-1000 RPM, TEFC, WASHDOWN DUTY
	CAPACITY:	0-2000 ML/MIN @ 80 PSI
SOLUTION OUTPUT:	PRIMARY FLOW:	0.25 – 2.0 GPM (15-120 GPH)
	SECONDARY FLOW:	1 – 20 GPM (60-1200 GPH)
	FLOWMETERS:	ABB MAGNETIC FLOW TUBES
	DISPLAYS:	DIGITAL
CONCENTRATION:	SOLUTION:	PRIMARY: 5 - 50%, VOLUME ON VOLUME
		SECONDARY: 0.2 TO 5.0%, VOLUME ON VOLUME
CONTROLS:	PLC:	ALLEN-BRADLEY MICROLOGIX 1500
	WATER:	LOW WATER FLOW ALARM AND FAILSAFE, MANUAL RESET
	LIQUID LEVEL:	CONDUCTIVITY-TYPE, 4 STAINLESS STEEL PROBE ASSEMBLY
UTILITIES:	ELECTRICAL:	460 VAC, 3 PHASE, 60 HERTZ, 30 AMP
	WATER:	30 GPM @ 50 PSI, COOL, CLEAN SOURCE

ENGINEERING SPECIFICATIONS:

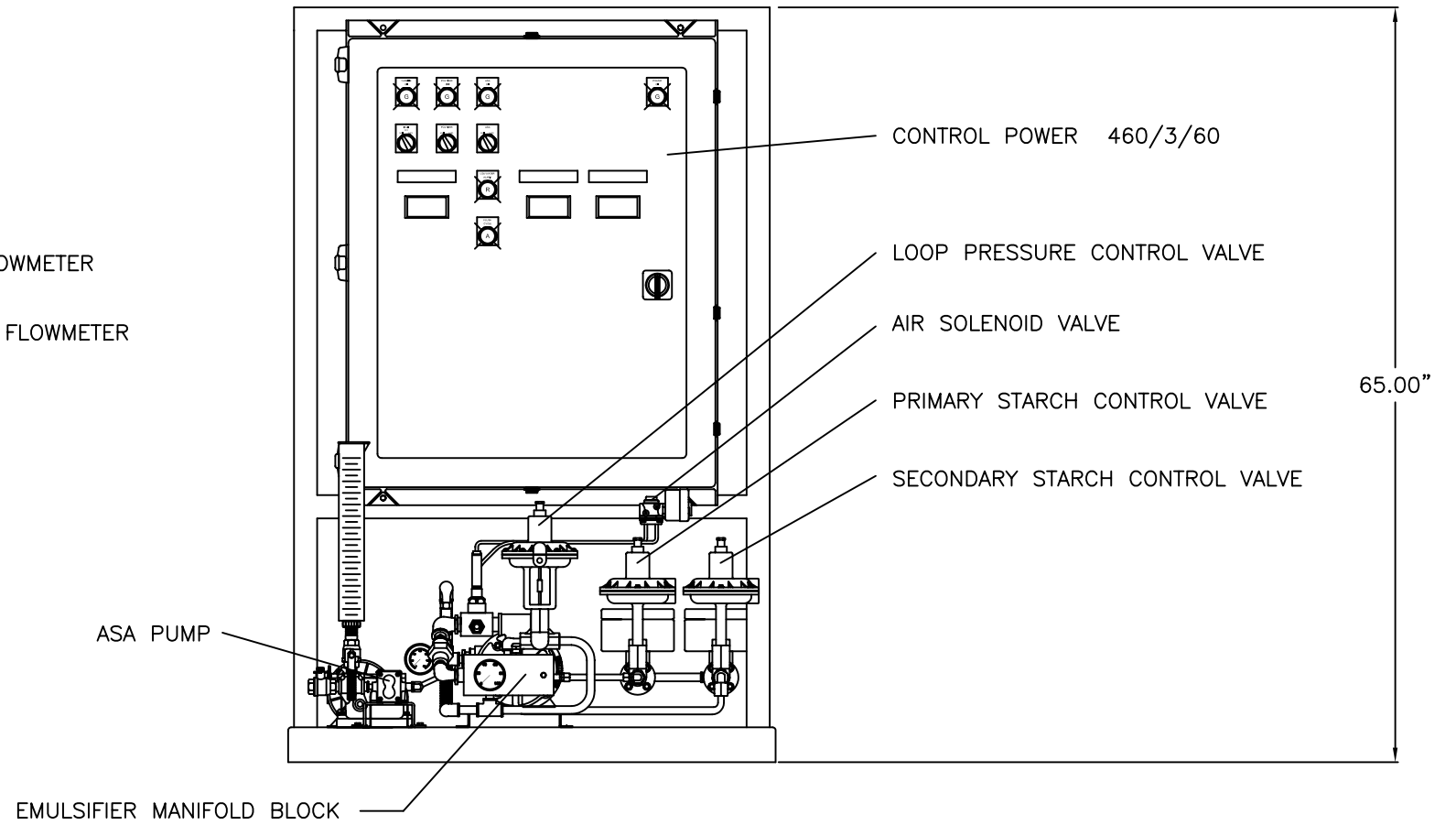
The NORCHEM Model A*1100 ASA emulsification unit is designed to meter and emulsify ASA and polymer or grafted liquid starch to create a stable emulsion with proper particle size and distribution for good sizing reactivity. The Model A*1100 features a dual element polymer/starch pre-conditioning injection system and internal auto flow functions to preserve emulsion formation and performance. The emulsifier system consists of a variable speed single stage frame mounted stainless turbine with a low pressure stainless manifold emulsifier block, AC variable speed ASA and Polymer/Starch injection pumps with analog following capabilities, Allen-Bradley PLC for DCS integration, primary and secondary water flow dilution headers. Additional instrumentation includes low water flow alarms and Norchem's EQM **E**mulsion **Q**uality **M**onitor real time laser monitor

NORCHEM**INC.****RIDGEPOINT TECH CENTER 8910 W. 192ND STREET MOKENA. IL 60448 708 478-4777**

ASA EMULSIFICATION SYSTEMS



TOP VIEW



FRONT VIEW

NOTE:
THIS DRAWING IS TYPICAL TO THE
PROPOSED CONFIGURATION WITHOUT ASA
OR STARCH MASS FLOWMETER.

INCOMING POWER

480 VAC/3 PH/60 HZ

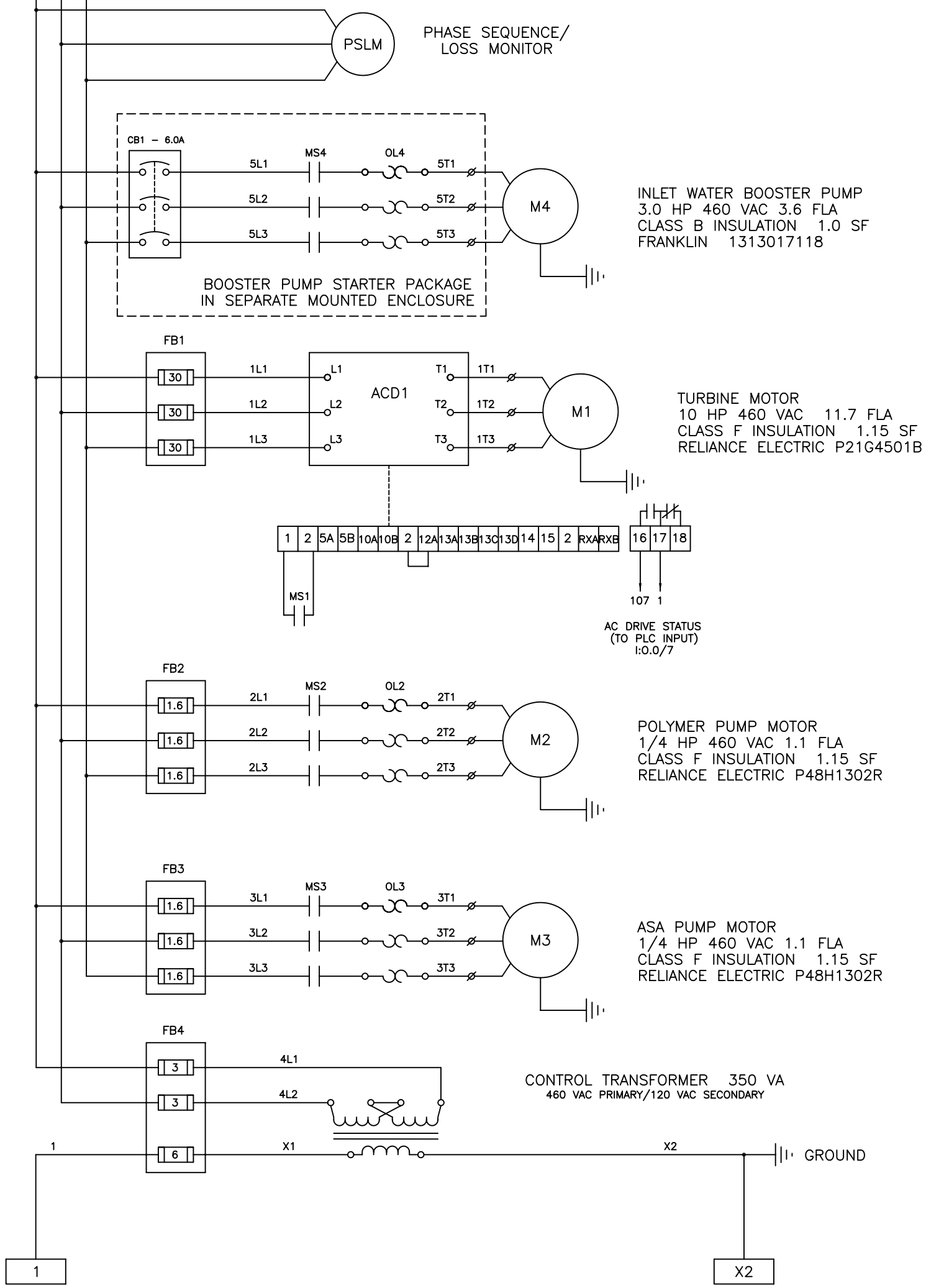
L1 L2 L3 G

MAIN DISCONNECT
30 AMP

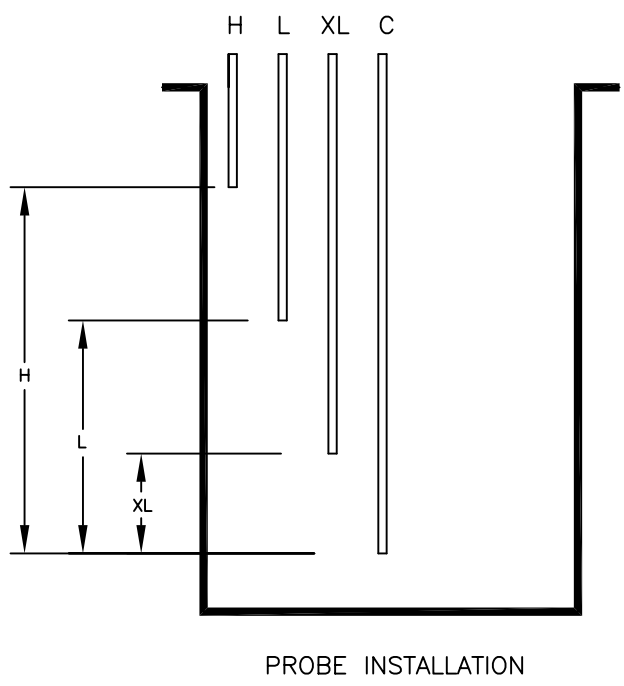
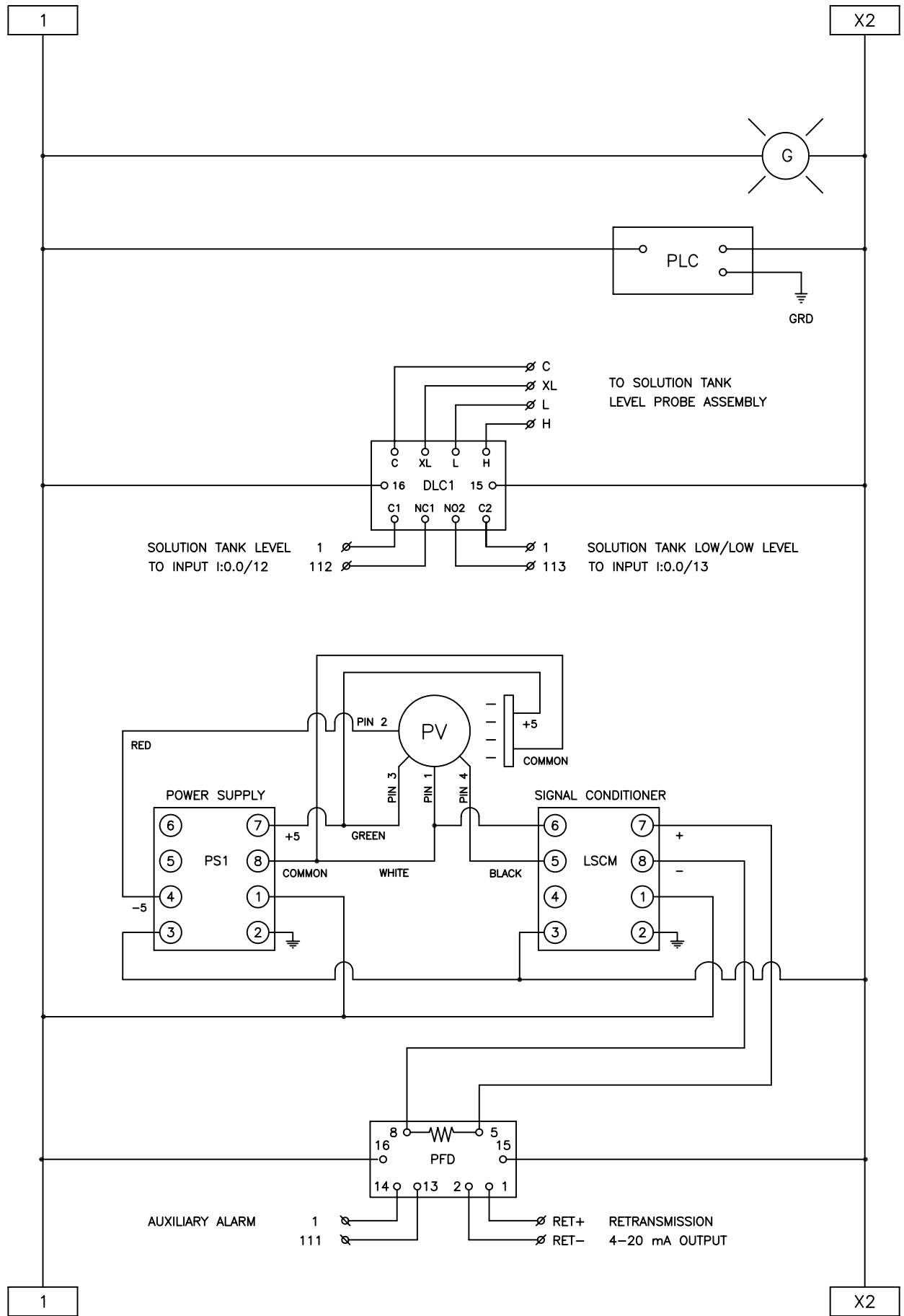
GROUND

NORCHEM INDUSTRIES
PRODUCT ENGINEERING

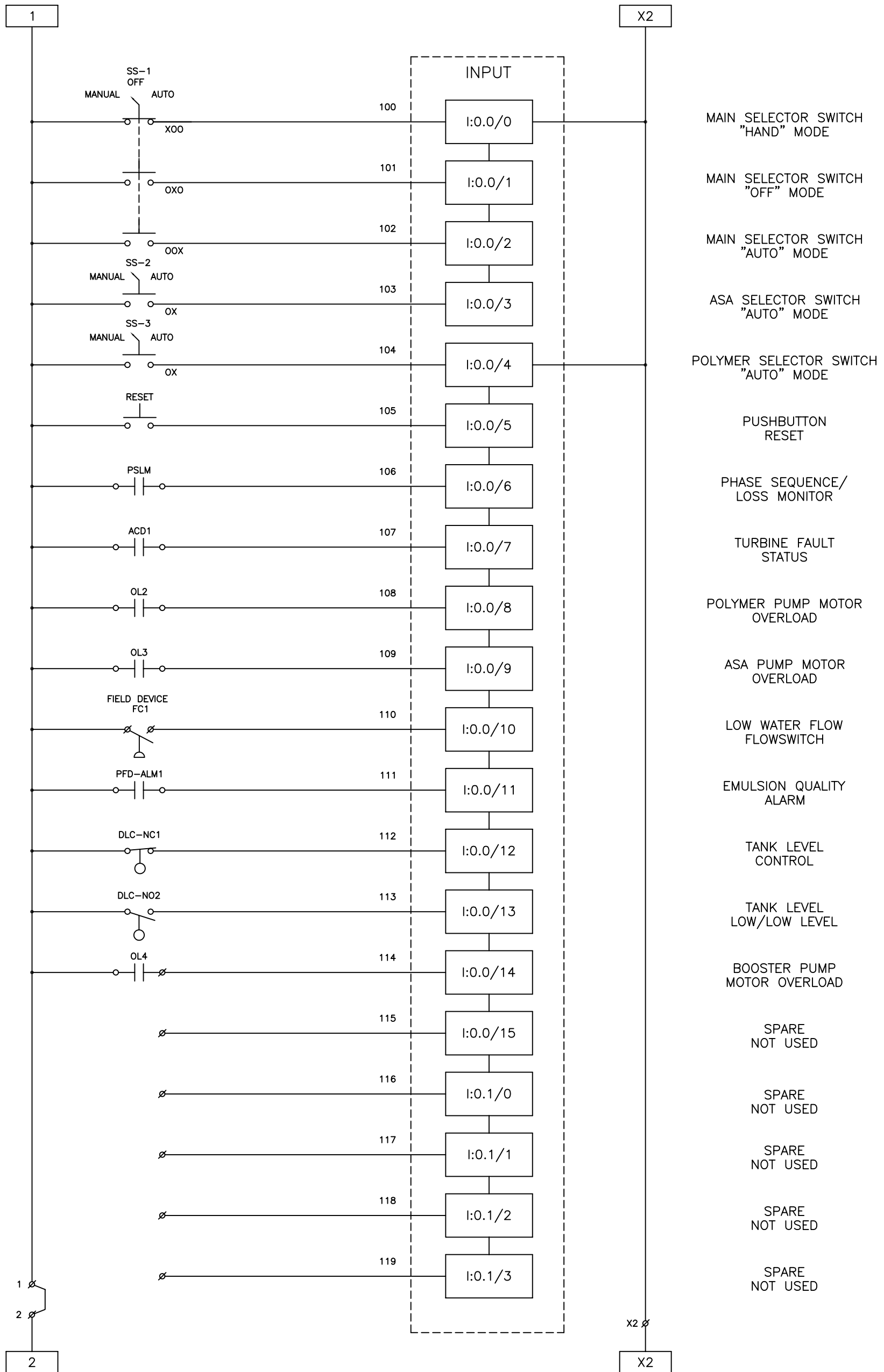
A*1000 ASA/POLYMER PREPARATION SYSTEM
ELECTRICAL SCHEMATIC



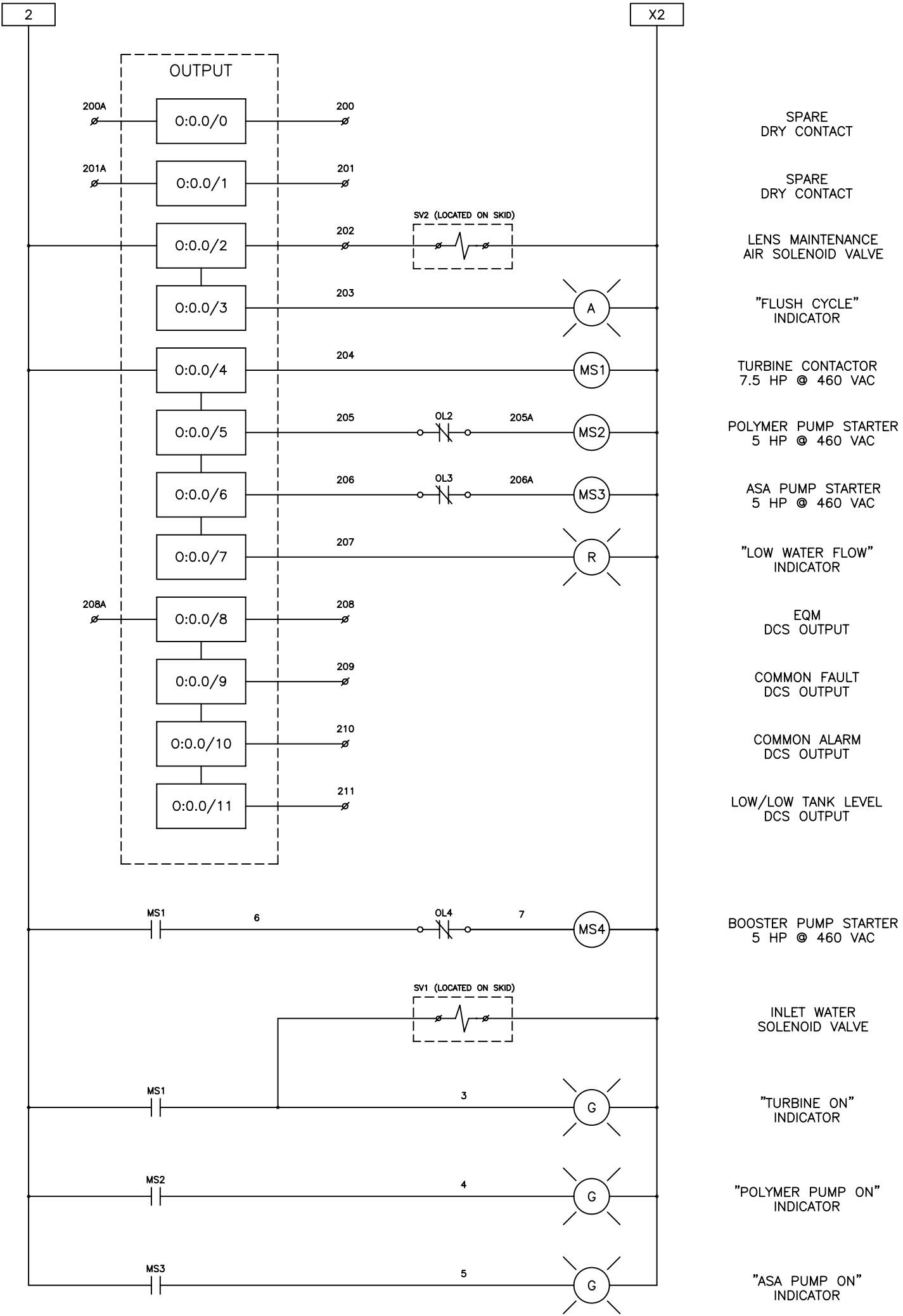
MODEL: A*1000
CUSTOMER: xxxxx
CUSTOMER P.O. NO.: xxxxx
NCI PROJECT: TYPICAL
SCHEMATIC NO.: NCI-082802-1A REV. A
SHEET 1 OF 4



MODEL: AP-VS800
 CUSTOMER:
 CUSTOMER P.O. NO.:
 NCI PROJECT: TYPICAL
 SCHEMATIC NO.: NCI-082802-1 REV. B
 SHEET 2 OF 4



MODEL: AP-VS800
 CUSTOMER:
 CUSTOMER P.O. NO.:
 NCI PROJECT: TYPICAL
 SCHEMATIC NO.: NCI-082802-1 REV. B
 SHEET 3 OF 4



SPARE
DRY CONTACT

SPARE
DRY CONTACT

LENS MAINTENANCE
AIR SOLENOID VALVE

"FLUSH CYCLE"
INDICATOR

TURBINE CONTACTOR
7.5 HP @ 460 VAC

POLYMER PUMP STARTER
5 HP @ 460 VAC

ASA PUMP STARTER
5 HP @ 460 VAC

"LOW WATER FLOW"
INDICATOR

EQM
DCS OUTPUT

COMMON FAULT
DCS OUTPUT

COMMON ALARM
DCS OUTPUT

LOW/LOW TANK LEVEL
DCS OUTPUT

BOOSTER PUMP STARTER
5 HP @ 460 VAC

INLET WATER
SOLENOID VALVE

"TURBINE ON"
INDICATOR

"POLYMER PUMP ON"
INDICATOR

"ASA PUMP ON"
INDICATOR